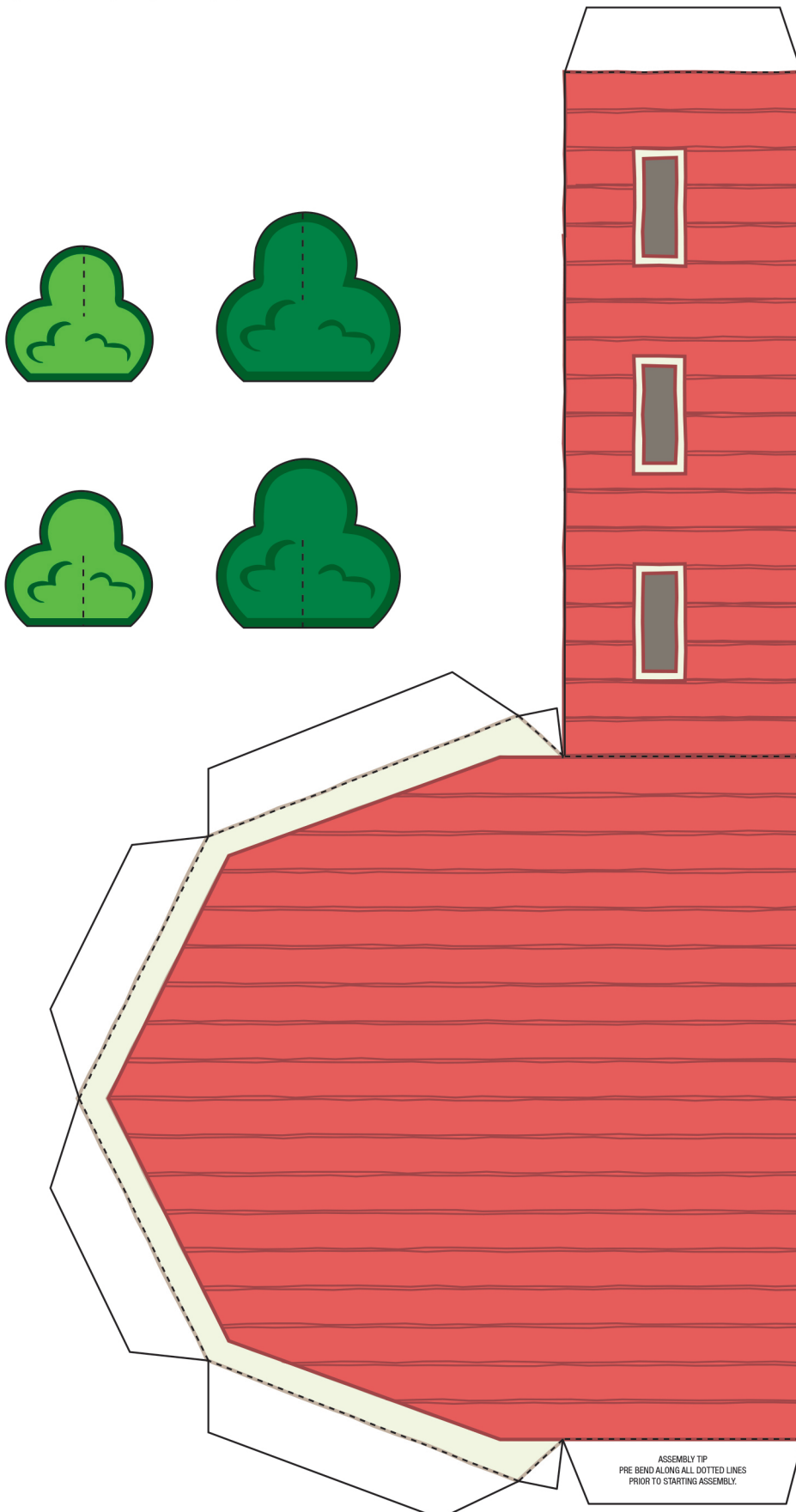


ASSEMBLY TIP
PRE BEND ALONG ALL DOTTED LINES
PRIOR TO STARTING ASSEMBLY.

INSTRUCTIONS: Print at 100% scale and stick onto card for structural support. Cut along the solid lines and fold along the dotted lines.



ASSEMBLY TIP
PRE BEND ALONG ALL DOTTED LINES
PRIOR TO STARTING ASSEMBLY.

INSTRUCTIONS: Print at 100% scale and stick onto card for structural support. Cut along the solid lines and fold along the dotted lines.



Print & Stick



A large rectangular area with a light green background, designed for printing and sticking. It features a solid top and bottom border. The interior is divided into four horizontal sections by three dotted lines. Each section contains ten horizontal wavy lines, providing a guide for writing or drawing.



INSTRUCTIONS: Print at 100% scale and stick onto card for structural support. Cut along the solid lines and fold along the dotted lines.